



ISNI

International Society
of Neuroimmunology

WE ARE NEUROIMMUNOLOGY

ISNI 2025

5-8 October

Chiba, Greater Tokyo-Japan

17th INTERNATIONAL CONGRESS

5th GLOBAL SCHOOL^{OF} NEUROIMMUNOLOGY

Update:
29 January 2025



About ISNI | Mission

- To further the knowledge of neuroimmunologic mechanisms and to apply them to human disease
- To encourage the generation and interchange of ideas and scientific data of relevance to the human nervous system development and disease, between basic and clinical scientists engaged in research in the field
- To sponsor and conduct symposia for General Members and persons engaged in or interested in research in the field
- To provide a central information service to distribute material related to the field, and to publish printed matter related to neuroimmunology



■ About ISNI | International Advisory Board

■ PRESIDENT

Roberto Furlan,
Milan, Italy

■ VICE-PRESIDENT

Heinz Wiendl,
Freiburg, Germany

■ SECRETARY/TREASURER

Lesley Probert,
Athens, Greece

■ PAST PRESIDENT

Francisco Quintana,
Boston (MA), USA

■ INTERNATIONAL ADVISORY BOARD

K. Akassoglou, San Francisco (CA), USA

F. Brilot, Westmead, Australia

S. Baranzini, San Francisco (CA), USA

A. Cross, St. Louis (MO), USA

J. Gommerman, Toronto (ON), Canada

N. Isobe, Fukuoka City, Japan

T. Korn, Munich, Germany

T. Kuhlmann, Muenster, Germany

R. Liblau, Toulouse, France

D. McGavern, Bethesda (MD), USA

V. Miron, Toronto (ON), Canada

S. Miyake, Tokyo, Japan

L. Piccio, Sydney, Australia

S. Pittock, Rochester (MN), USA

A. Prat, Montreal (QC), Canada

D. Schafer, Worcester (MA), USA

C. Stadelmann, Göttingen, Germany

T. Yamamura, Tokyo, Japan

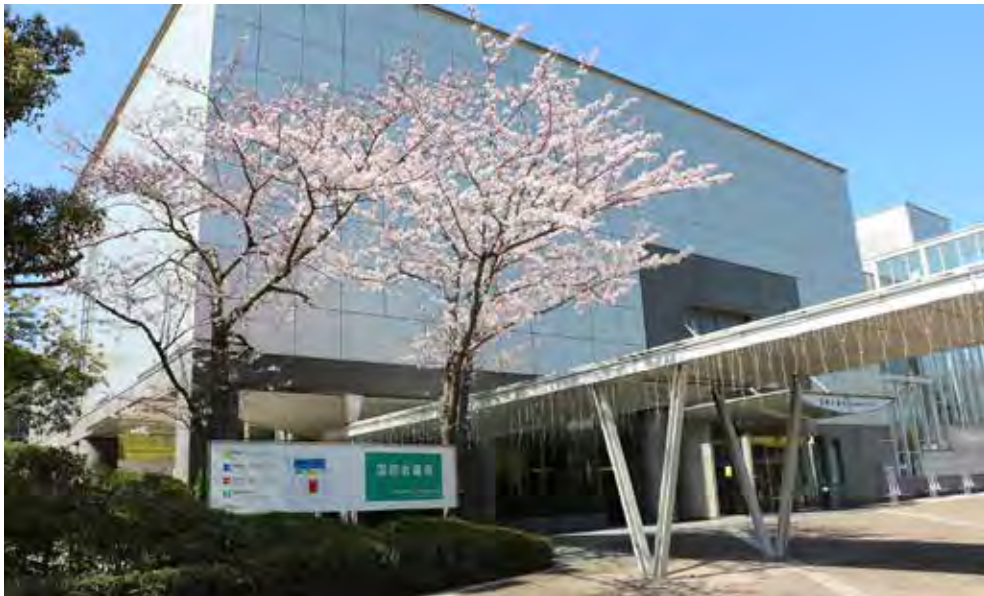


■ ISNI 2025 Chiba - Japan | Congress Venue

■ Makuhari Messe, Inc.

2-1, Nakase, Mihama-ku, Chiba-city, 261-8550 Japan

Official Congress Website: www.isniweb.org/congress



CONGRESS ORGANIZERS



CHAIR

Takashi Yamamura
Tokyo



VICE CHAIRS

Kazuo Fujihara
Fukushima



VICE CHAIRS

Satoshi Kuwabara
Chiba



SECRETARY

Noriko Isobe
Fukuoka



FINANCE

Yuko Shimizu
Tokyo

ORGANIZING COMMITTEE

CHAIR

Sachiko Miyake
Tokyo

VICE CHAIRS

Okamoto Tomoko
Tokyo

ADVISORS:

INTERNATIONAL

IAB members of ISNI

LOCAL

Jun-ichi Kira
Fukuoka
Akio Suzumura
Nagoya
Susumu Kusunoki
Tokyo
Takeshi Tabira
Tokyo
Takahiko Saida
Kyoto

Invitation letter to ISNI 2025

We are very pleased that we will be hosting ISNI 2025 in Japan next October. After COVID-19, our daily life as well as academic activities changed drastically: to prevent spreading of infection, virtual meetings have tended to be preferred so we lost many opportunities for building connections and scientific discourse through social interactions with wine and feasting. However, the trend has now clearly changed.

In Japan, we are now seeing many more tourists than before COVID-19, and station platforms of the Shinkansen bullet train are crowded with foreign tourists. This seems to be like a rebound phenomenon after withdrawal of immunosuppressive treatments!

Historically, Japan was first “discovered” by the West in 1543, with the Portuguese bringing new technology to Japan, such as matchlock guns which greatly changed the form of war and fighting strategies. Now I feel that Japan is being rediscovered by tourists with great enthusiasm and joy.

I am not working for a travel agency, but as if I am, I like to send you a message “We very much look forward to seeing you in ISNI 2025, Chiba”

Please visit Japan to attend the world-neuroimmunology event, and bring together new knowledge, ideas and academic weapons.

Prof. Takashi Yamamura

Congress Chair

*Director, Department of Immunology,
National Institute of Neuroscience,
NCNP Ogawahigashi, Kodaira, Tokyo, Japan*



■ ISNI 2025 Chiba - Japan | Preliminary Topics

■ ISNI NAMED LECTURES

Newsom Davis Lecture
The Rita Levi-Montalcini Neurobiology Lecture
The Immunology Lecture
The Dale McFarlin Lecture

■ MORNING LECTURES

Long COVID and ME/CFS
New perspective
Computer neuroscience
Pain and glial cells

■ SYMPOSIA

Microbiome and neuroimmunology
Immunology of MS
Stress, depression, and neuroimmunology
Regulatory gene and environmental factors in MS (1)
Neuroimmunology for neurodegenerative disorders and Alzheimer's disease
Memory of disease and neuroimmunological interactions
Regulatory gene and environmental factors in MS (2)
Potential new therapy in neuroimmunology
Glia: new perspectives
Neuro-immune crosstalk
Seeking for new treatments
Immunological mechanisms in nervous system disorders
Autoantibodies
Translational neuroimmunology
Brain-Immune communication

■ OTHER ACTIVITIES

GSNI Pre-Congress Course
Plenary Lectures
Industry Forum
Peka Kucha
Young Neuroimmunologists Forum + Mid Career Award
White Paper Presentation
Meet the Professors
JMSS Young Neurologist Forum
Tech Symposia
Workshops – oral presentations
Poster Presentations



■ INVITED LECTURE SPEAKERS

The Dale McFarlin Lecture

Anne Cross, Department of Neurology, Washington University School of Medicine - St Louis (MO), USA

The Immunology Lecture

Jen Gommerman, Department of Immunology Temerty, Faculty of Medicine, University of Toronto

Canada Research Chair (Tissue Specific Immunity) - Toronto (ON), Canada

The Rita Levi-Montalcini Neurobiology Lecture

V. Wee Yong, Hotchkiss Brain Institute, Departments of Clinical Neurosciences and Oncology at the University of Calgary - Calgary (AB), Canada

Newsom Davis Lecture

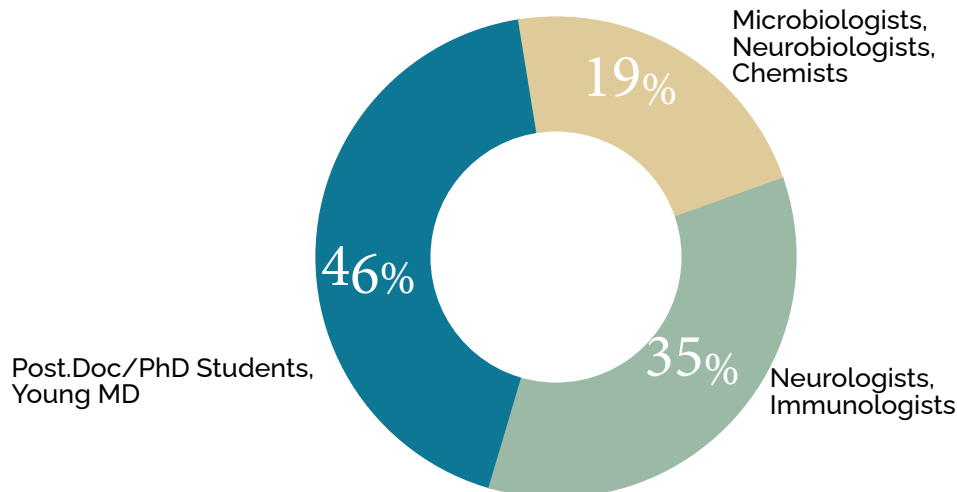
Frauke Zipp, Department of Neurology Focus Program Translational Neuroscience and Immunotherapy
Rhine Main Neuroscience Network University Medical Center of the Johannes Gutenberg University Mainz
Mainz Germany



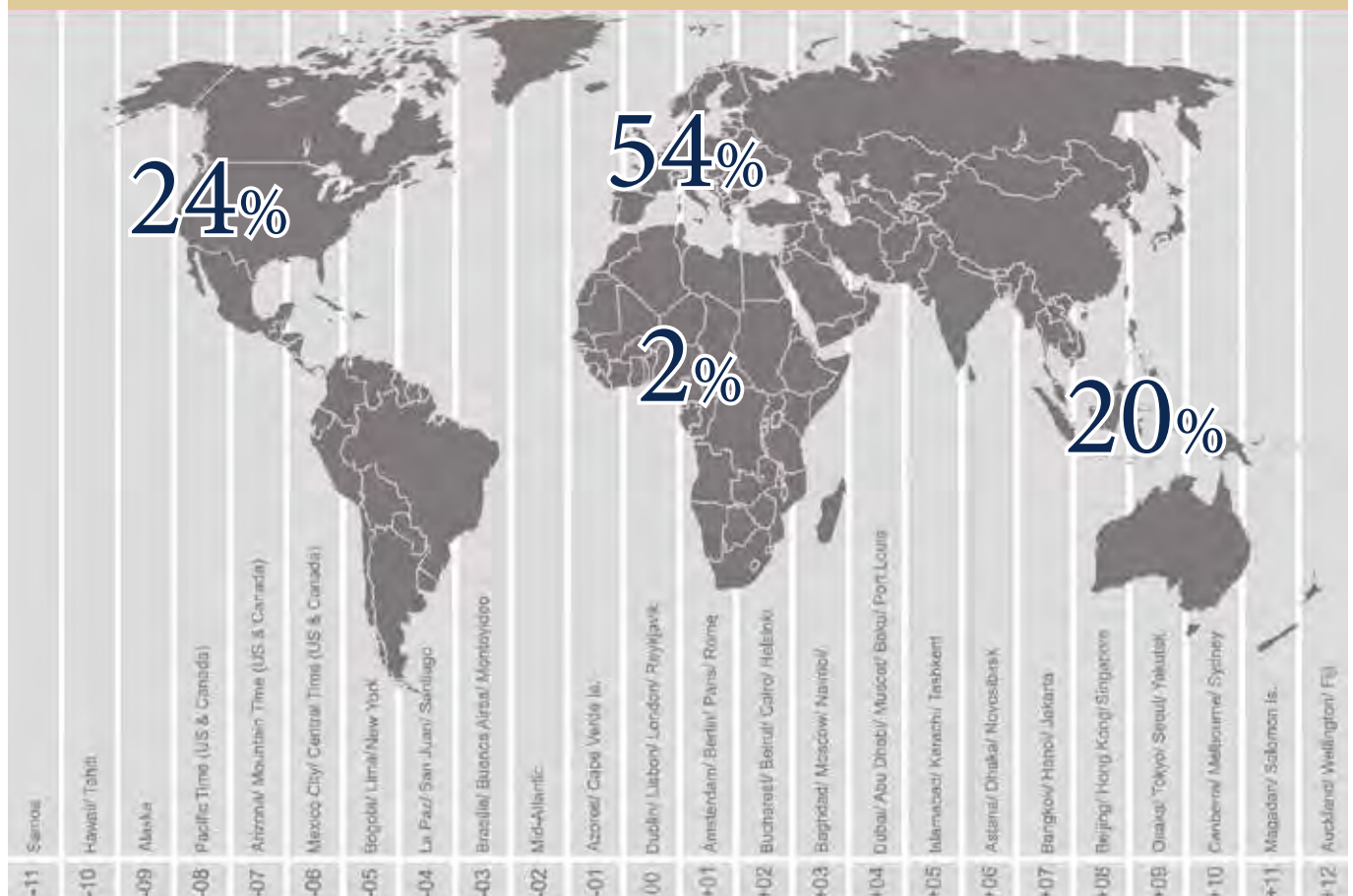
Why Sponsor?

ISNI and its regional schools represent the largest and most representative community of neuroimmunologists worldwide. All the main representative clinicians and researchers and the next generation of scientists and doctors will be there.

ATTENDEES BY CATEGORIES



ORIGIN OF ATTENDEES



Past ISNI Congresses



ISNI International Society
of Neuroimmunology

WE ARE NEUROIMMUNOLOGY

PAST CONGRESSES

11416 attendees have attended the congresses until 2023



ISNI International Society
of Neuroimmunology

WE ARE NEUROIMMUNOLOGY



ISNI International Society
of Neuroimmunology

WE ARE NEUROIMMUNOLOGY

ISNI Congress 2025

SPONSORSHIP LEVELS AND BENEFITS

■ Sponsorship benefits description

Updated Sponsorship Opportunities for ISNI 2025

Dear valued Sponsor,

I hope this message finds you well. We deeply appreciate your interest in supporting ISNI 2025 and your commitment to advancing the goals of this important event.

After reviewing the responses and feedback we have received since publishing the initial Sponsor Prospectus, we recognized an opportunity to enhance and refine the sponsorship structure.

At the time of creating the original prospectus, we did not yet have clarity on how many sponsors would sign on or which levels they would choose. With this additional insight, we've made thoughtful adjustments to better serve our sponsors' needs and provide even greater value for their contributions.

These updates include:

- The introduction of new premium sub-levels (e.g., Diamond, Platinum Plus, Gold Plus) designed to offer exclusive benefits for sponsors aiming to maximize their visibility and impact.
- Enhanced clarity in benefits distribution across levels, ensuring each tier reflects distinct, proportional value for sponsors.
- Additional tailored opportunities for high-level contributors, including naming rights and premium branding options.

These updates ensure that all our sponsors receive the best possible return on their investment, along with customized recognition for their support. We are confident that this revised structure will create more meaningful engagement opportunities for you at ISNI 2025.

Thank you for your understanding and ongoing partnership. Please do not hesitate to reach out if you have any questions or if there is anything further we can assist you with.

Looking forward to collaborating with you!



Sponsorship benefits description

1. **Diamond Sponsor** (JPY 30,000,000 and above)

- Platinum-level benefits, plus:
 - Exclusive branding of the Welcome Reception.
 - Priority placement for booth.
 - Premium logo placement in all event communications.
 - Exclusive naming rights for the Convention Hall.
 - Two additional internal full-page ads in the abstract book or program.
 - Five additional congress registrations (total: 10).
 - Dedicated sponsor recognition at the opening ceremony.
 - VIP lounge 1 at floor 1, for the entire event

2. **Platinum Sponsor Plus** (JPY 25,000,000 to 29,999,999)

- Platinum-level benefits, plus the following extras:
 - Exclusive branding of one plenary session.
 - Premium ad placement in the congress bag.
 - One additional full-color internal page in the abstract book.
 - VIP lounge 2 at floor 1, for the entire event
 - Three additional congress registrations (total: 8).

3. **Platinum Sponsor** (JPY 20,000,000 to 24,999,999)

- Booth: 27 sqm.
- Naming rights for the International Convention Room.
- Hospitality Lounge for the entire event.
- Two lunch seminars.
- Premium ad placements in the abstract book (inside front/back cover and one internal page).
- Logo placement on lanyards (shared with one other sponsor).
- Five congress registrations.

4. **Gold Sponsor Plus** (JPY 18,000,000 to 19,999,999)

- All Gold-level benefits, plus:
 - Branding of one breakout session.
 - Naming rights for room 201.
 - Priority booth placement (18 sqm).
 - One additional acknowledgment for a coffee break (total: 4).
 - One additional lunch seminar (total: 2).
 - Logo placement on a shared banner in the exhibition hall.
 - Two additional congress registrations (total: 5).

Sponsorship benefits description

5. **Gold Sponsor** (JPY 15,000,000 to 17, ,999,999)
 - Booth: 18 sqm.
 - Lounge space for one day.
 - Three coffee break acknowledgments.
 - One lunch seminars.
 - One full-color internal page in the abstract book.
 - Three congress registrations.
6. **Silver Sponsor** (JPY 10,000,000 to 14, ,999,999)
 - Booth: 9 sqm.
 - Naming rights for room 301.
 - Lounge space for half a day.
 - One coffee break acknowledgment.
 - One lunch seminar.
 - Half-page ad in the abstract book.
 - Two congress registrations.
7. **Bronze Sponsor** (JPY 5,000,000 to 9,999,999)
 - Booth: 6 sqm.
 - Logo acknowledgment in congress materials.
 - One congress registration.
8. **General Sponsor** (JPY 4, ,999,999 or less)
 - Acknowledgment in congress materials.

The above levels will be effective from January 29, 2025

Please contact EEM for availability and inquiries

| PROMOTIONAL OPPORTUNITIES | PRICES |
|---|---------------|
| Industry Forum (30 mins) | JPY 4,000,000 |
| Lunch Time Seminar | JPY 3,500,000 |
| Half page ad in abstract book and /or printed program | JPY 4,000,000 |
| Full page ad in abstract book and /or printed program | JPY 6,000,000 |
| One page insert in congress bag | JPY 2,000,000 |
| | |
| | |
| | |
| | |
| | |
| | |
| | |
| | |
| | |

| EXHIBITION | |
|----------------------|---|
| Space Only (3X3 sqm) | JPY 4,000,000 |
| Shell Scheme | See page 18, 19 and 20 for more details |

| EDUCATIONAL OPPORTUNITIES | |
|-------------------------------------|------------|
| Educational Grant towards ISNI 2025 | Any amount |
| | |
| | |

INDUSTRY FORUM

To enhance the exchange of scientific knowledge and bridge communication gaps, ISNI has launched the Industry Forum initiative. This platform invites pharmaceutical companies to present their research pipelines, rather than specific products, through their internal medical directors or equivalent scientific representatives.

There will be 9 slots of 30 minutes for each Company in total including Q&A. The sessions are conducted in English.

PARALLEL SPONSORED SYMPOSIA LUNCH TIME SEMINAR

Opportunity to organize an official parallel non-CME industry symposium, up to 60 minutes (Program subject to approval by the ISNI2025 Committee).

In person, includes hall rental, standard audio/visual equipment and display table. Possibility to record your onsite presentation and place it on the ISNI online platform and livestreaming can be purchased (to be quoted). Permission to use the phrase "Official ISNI2025 Symposium".

The supporting company, in addition to the support fee, must cover all speakers' expenses including registration, accommodation and travel. This also applies in case the Sponsored Symposium speakers have already been invited by the event organizers.

APP OF ISNI 2025

The official App will include the abstract book and scientific program. The support includes: rotating banner in the Home menu, a page dedicated to your Company profile including the possibility documents, video, webpage, etc. . Possibility to setup a meeting agenda, reports and stats on visibility and contacts.

CONGRESS LANYARDS AND BAGS

Supporter will have the opportunity to brand bags and lanyards the Company logo of the supporter. Max of two logos (only for Platinum sponsors)

COMPANY CONTENT PAGE

Gather all your content for the ISNI participants in one dedicated web page! ISNI will offer an individual space where each company can have its own promotional site to present products, symposium, booth information or any other company related content.

VIP EXECUTIVE LOUNGES (available on request)

Located at floor 1, including elegant table & sofa set for 8 people. Special catering can be provided (additional charges)

HOSPITALITY SUITES – MEETING ROOMS

An opportunity to hire a room at the Congress venue that may be used as a hospitality suite or meeting room. Supporter will be able to host and entertain its guests throughout the Congress. Supporters will have the option to order catering and AV equipment at an additional cost.

HOW TO PROCEED WITH MY SPONSORSHIP REQUEST

To agree upon and confirm your sponsorship level, please contact EEM Association Management, the official treasurer of ISNI at isnisponsors@eemservices.com. **Application deadline: March 15, 2025**

For arrangements regarding customizations, stand setup, and any other onsite requirements, please reach out to our representative in Japan:

Inter Group Corporation at the dedicated email: isni2025chiba@ig-online.jp



■ ISNI 2025 | Payment & Cancellation Policy

CANCELLATION /MODIFICATION POLICY:

For sponsorship levels and promotional items:

All requests to cancel or modify your sponsorship level or promotional items must be submitted in writing to:
EEM Business Events - Email: ISNISponsors@eemservices.com

For exhibition-related requests:

Cancellations or modifications of confirmed exhibition requests must be addressed to our local partner:

Inter Group

Email: isni2025chiba@ig-online.jp

The Organizers shall retain:

- 10% of the Sponsorship Amount if the cancellation/reduction is made before 15/04/2025 inclusive
- 50% of the Sponsorship Amount if the cancellation/ reduction is made between 16/04/2025 and 15/08/2025 inclusive.
- 100% of the Sponsorship Amount if the cancellation/ reduction is made after - 15/08/2025

TERMS OF PAYMENT:

- 60% upon receipt of the Sponsorship agreement and first invoice
- 40% by 15/08/2025 (100% afterwards)

All payments must be received before the start date of the congress. Should the Supporter fail to complete payments prior to the commencement of the congress, the Organizer will be entitled to cancel the reservation while cancellation will be subject to cancellation fees as determined above.

PAYMENT METHODS

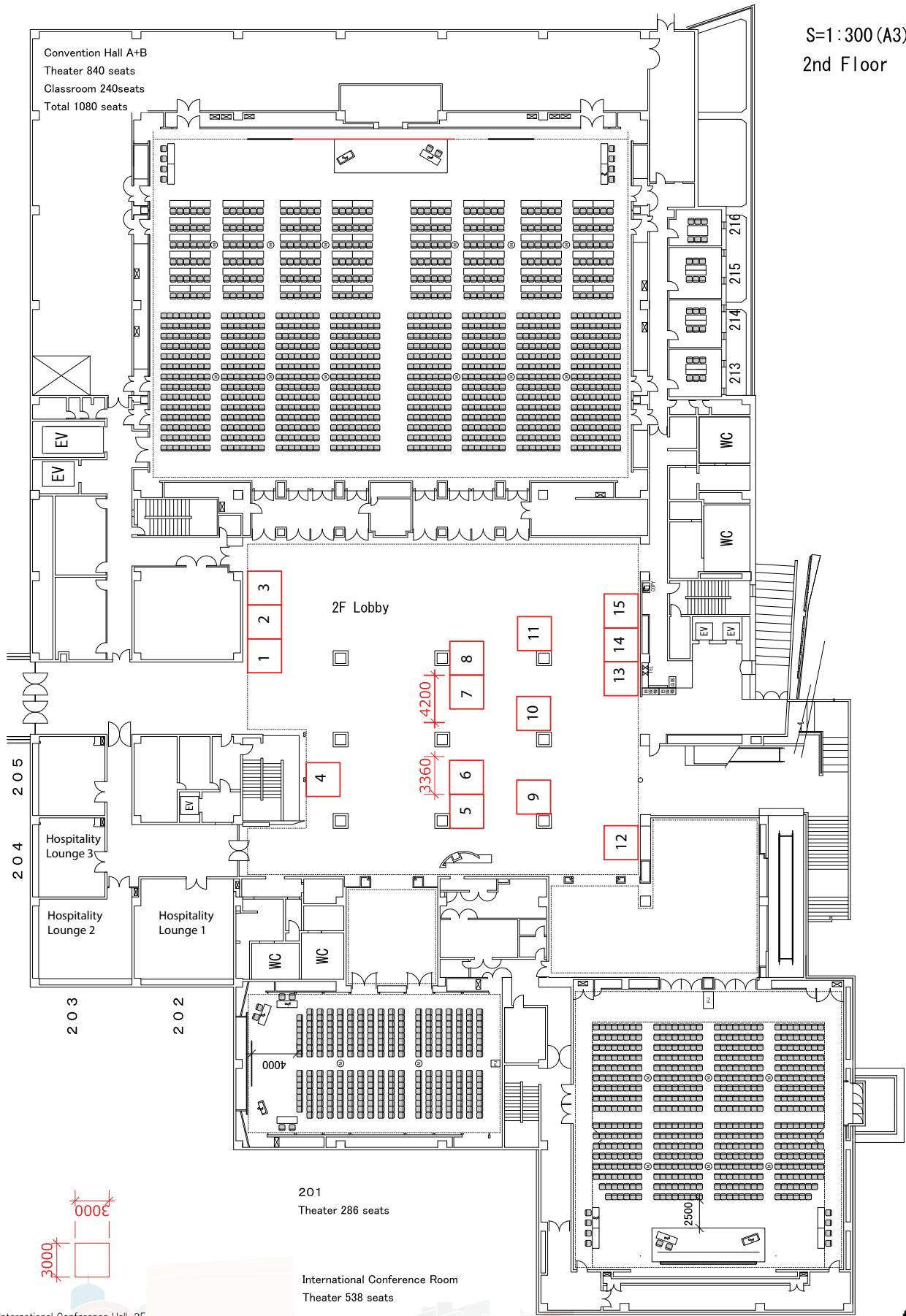
(Details will be indicated in the invoice)

Option 1: Payment by Bank Transfer

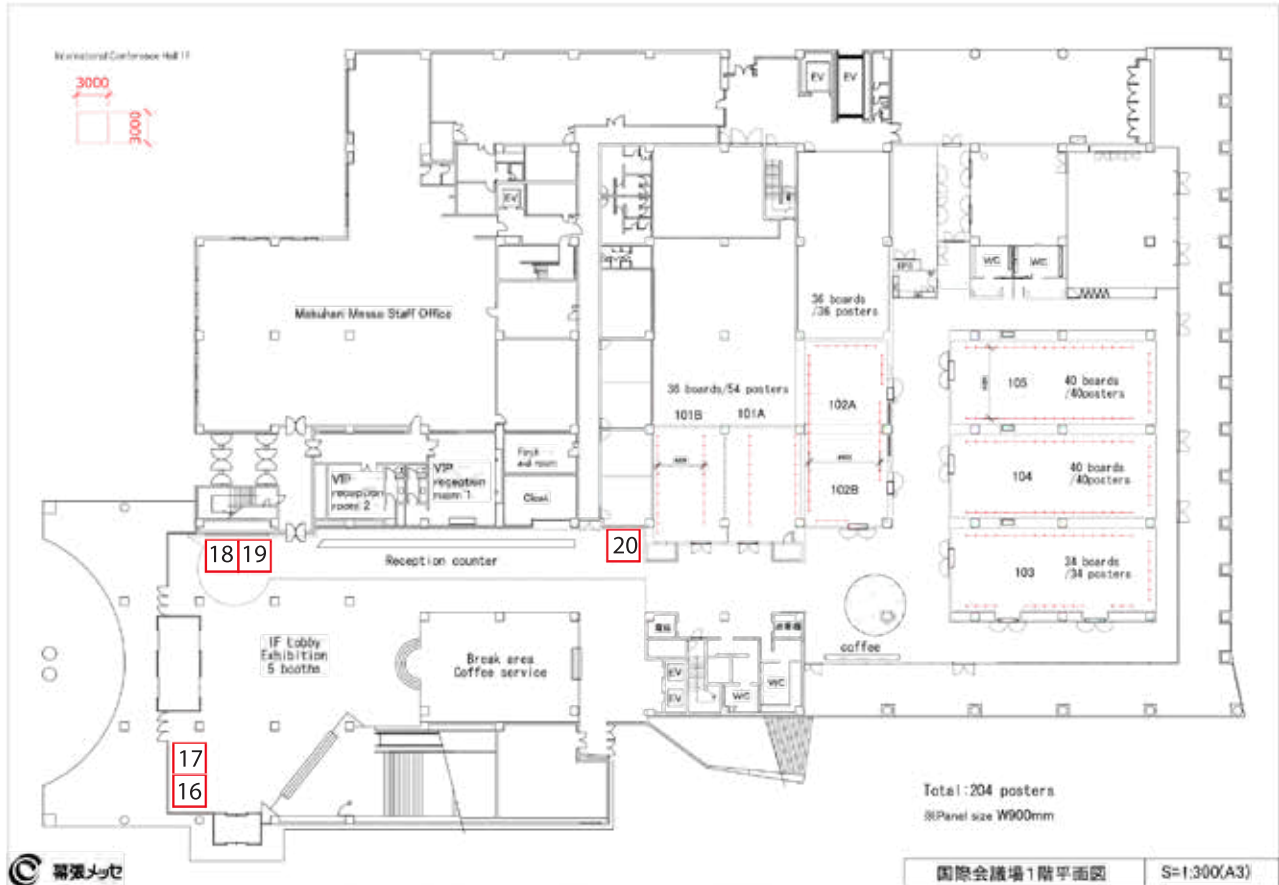
Option 2: Payment by Credit Card (4% surcharge applies)

All Supporters will be acknowledged on the ISNI2025 website (www.isniweb.org/congress), in the ISNI2025 app and Sponsors' section of the program book. Platinum Sponsors' logo will also be featured on the opening slide in all meeting halls before the session starts, coffee and lunch breaks

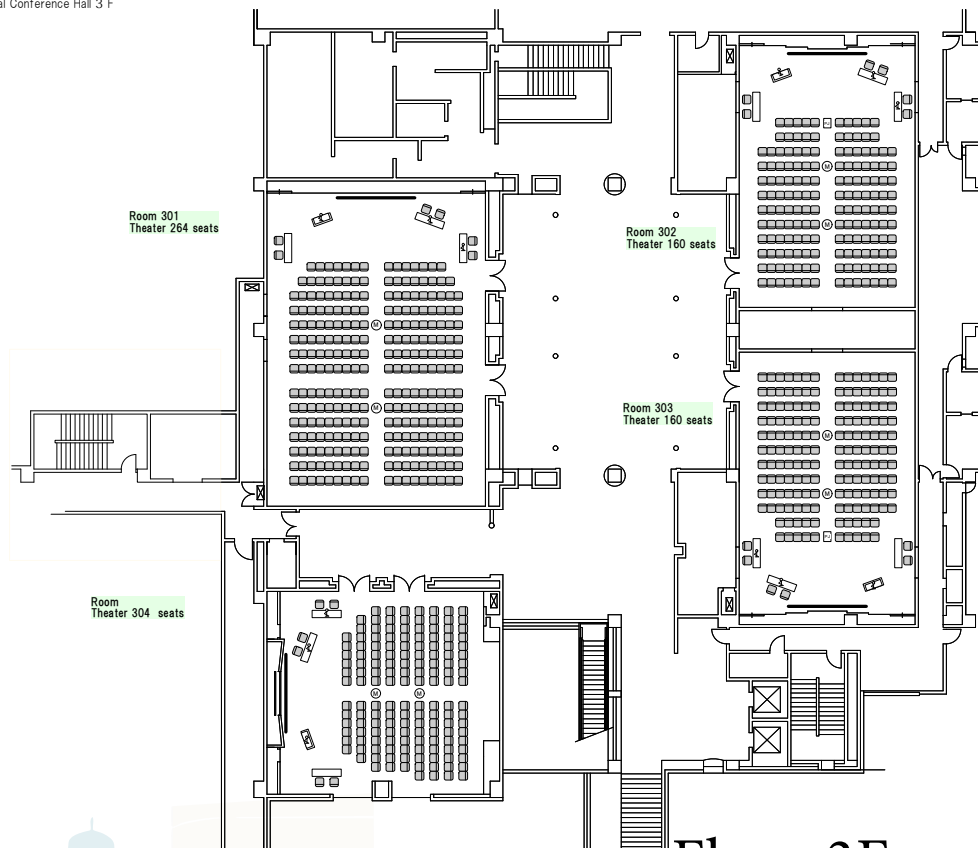




Floor 1F



International Conference Hall 3 F



Floor 3F

S=1:200 [A3]

Exhibition

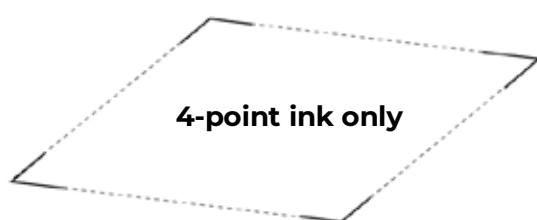
■ Application Deadline: **May 30th, 2025**

* Should available booth numbers be reached, we may close applications before the deadline.

■ Exhibition Fee:

Basic booth : 4,000,000 JPY (unit price) per booth

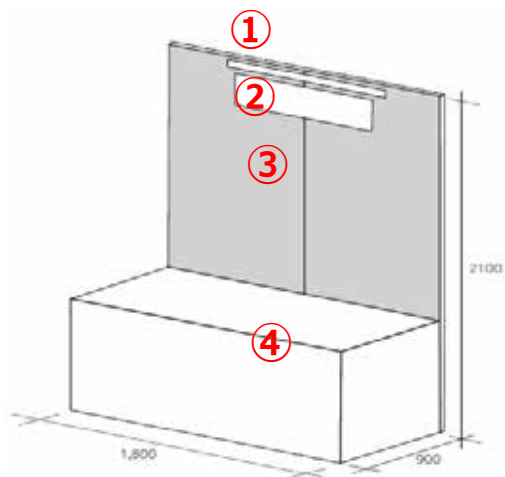
- ◇ **Booth Type: Space Booth** (W3000×D2000×H2500).
Height restrictions for decorations and exhibits



[Space Booth Specifications]

- Each section will be 3,000mm wide x 2,000mm deep.
 - Booth creation, electrical wiring work, additional equipment, etc. will incur a fee (paid by the exhibitor).
 - Direct work on the floor (duct tape, anchors, bolts, etc.) is not permitted.
- Punch carpet, etc. cannot be glued to the floor.

◇ Booth Type: Basic Booth



① Lighting

Fluorescent lamp (FL40W) x 1 lamp

② Company name plate

W900 x H200mm

Written in unified font (Gothic)

White base, black text

③ Back panel

W1800 x H2100mm

④ Exhibition stand

*conference table, white cloth desk

W1800 x D900 x H700mm

1

Exhibition

■ Decorations and equipment rentals :

Decorations and equipment not included in each booth will incur charges. Our official contractors are able to provide your booth with decorations and rental equipment for a fee. We will notify you of the details after the application is completed.

■ Cancellation of application for exhibition :

Please note that you cannot withdraw your application once you submit the application form for exhibition and the booth fee **will not be refunded** unless the secretariat recognizes the reason for cancellation as a force majeure.

■ Exhibit management

Please note that the exhibitors are responsible for the management of their own exhibits, and the secretariat will not compensate for any damages caused by thefts, losses, fire or inevitable accidents during the exhibition.

■ About Logistics :

All packages sent to the exhibition will be collectively managed by a designated logistics company throughout the exhibition period. Freight charges will vary depending on the amount of cargo, the number of cartons, weight or the transportation area. Estimation cost will be calculated by each case. Please contact us.

【Contact】

E-mail : isni2025chiba@ig-online.jp

Local Secretariat of ISNI 2025 (c/l Inter Group Corp.,)

Kyodotsushin Kaikan 4F, 2-2-5, Toranomon, Minato-ku, Tokyo, 105-0001

Exhibition

■ Venue :

MAKUHARI Messe Convention Hall 2F Lobby

■ Exhibition schedule (tentative) :

| | |
|-----------------------|---|
| Exhibit Installation: | October 5 (Sun), 2025, 13:00 – 18:00 |
| Exhibit Hours: | October 5 (Sun), 2025, 18:00 – 20:00 October 6 (Mon), 2025, 8:00 – 17:00 October 7 (Tue), 2025, 8:00 – 17:00 October 8 (Wed), 2025, 8:00 – 17:00 |
| Exhibit Teardown: | October 8 (Wed), 2025, 17:00 – 19:00 |

This schedule is subject to change. The final detailed schedule will be announced later.

■ Application method :

Please apply via an online application form on the sponsorship page of the meeting website.

(1) A confirmation e-mail will be sent after you have submitted an application.

(2) Another e-mail confirming the receipt of your application will be sent from the sponsorship secretariat.

Your application will be complete by receiving (1) and (2) mentioned above.

Please note that applicants that are not eligible for application will be notified later after due consideration.

When you have any troubles applying online, please contact the sponsorship secretariat.

■ Payment of the booth fee :

Once the booth layout is finalized, we will send you the bill. Please pay the amount into the specified account (indicated on the statement) within 2 months of receipt of the bill. Please pay the bank transfer fee.

■ Allocation of space :

While booths will basically be allocated in the order of acceptance of application in each category, companies or organizations that apply for more booths will be prioritized. You will be asked to indicate your preferred booth position on the application form, but please note in advance that the secretariat will consult with you for adjustment if your preferred booth has already been assigned.

Notice: Booth allocation will be determined from the end of April 2025.





ISNI International Society
of Neuroimmunology

WE ARE NEUROIMMUNOLOGY

Info & Contacts



www.eemservices.com

Proudly the official ISNI congress organizer since 2004

Book your item or contact us for information:

isnisponsors@eemservices.com